

COMUNE DI SANTA FIORA

provincia di Grosseto

Piano Regolatore Generale



PIANO STRUTTURALE
Quadro Conoscitivo

AREE DEGRADATE E SITI DA
BONIFICARE

1:10.000

maggio 2007

tav. **U13**

PROGETTISTI INCARICATI:

Dott. Arch. Paolo Giannelli

Dott. Geol. Daniele Nenci

Dott. Agr. Fabio Menchetti

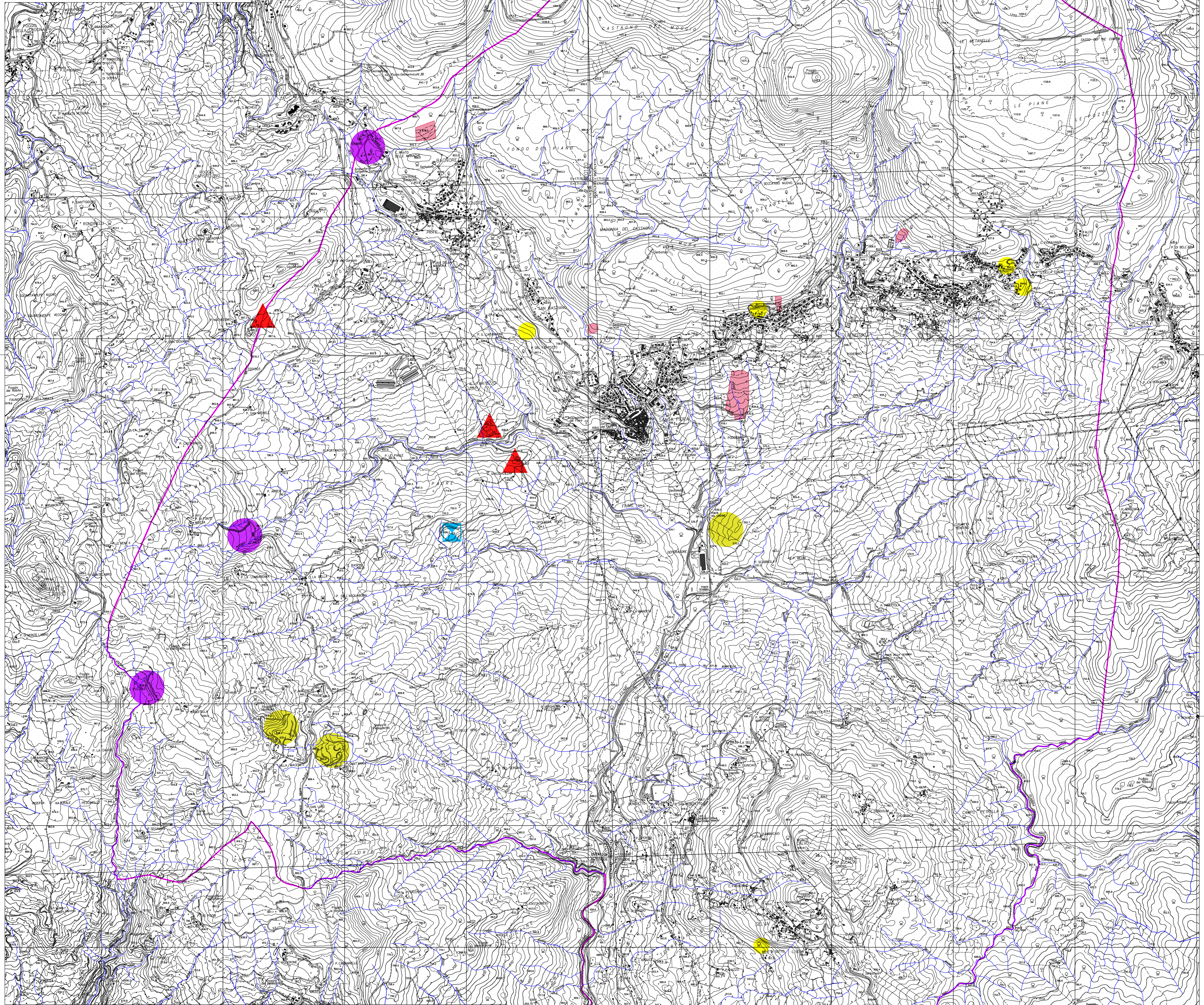
Il Sindaco
Renzo Verdi

L'Assessore all'urbanistica
Renzo Verdi

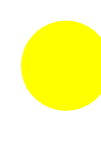





Il Garante dell'informazione
Geom. Maurizio Marini

Il Responsabile del Procedimento
Geom. Maurizio Onofri

Ufficio Urbanistica
Geom. Maurizio Marini



LEGENDA

-  Siti minerari abbandonati
-  Aree percorse da incendi
-  Discarica dismessa (sito GR A.P.4 del P.R.B.)
-  Siti con manifestazioni gassose tossiche
-  Cave attive
-  Siti geotermici da bonificare