



PIANO STRUTTURALE

**CARTA DELLA ACCLIVITA' DEI
VERSANTI**

1:10.000

Marzo 2007

tav. **05**

PROGETTISTI INCARICATI:

Dott. Arch. Paolo Giannelli

Dott. Geol. Daniele Nenci

Dott. Agr. Fabio Marchetti

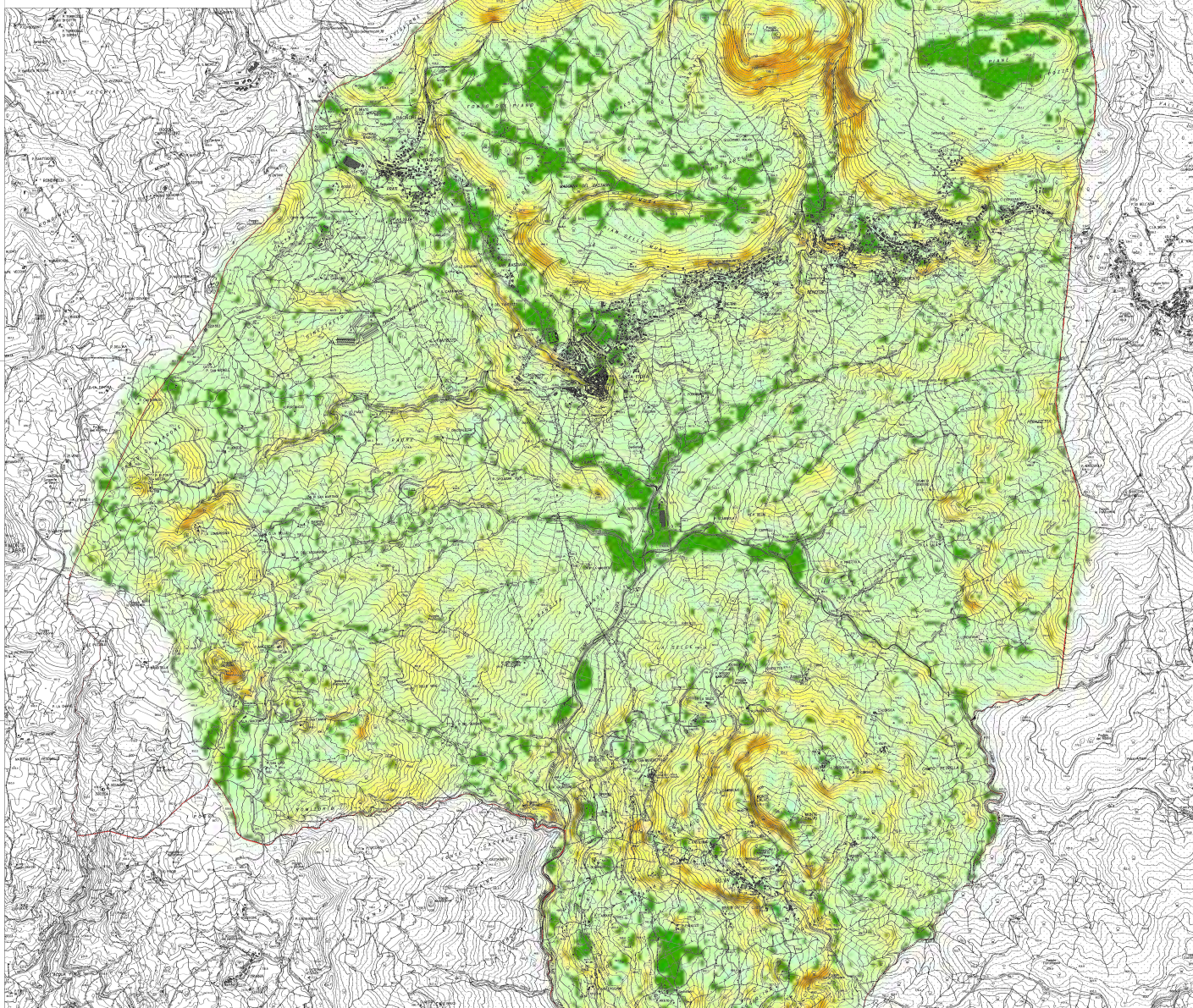
Il Sindaco
Renzo Verci

L'Assessore all'Urbanistica
Renzo Verci

Il Comune dell'Informatica
Geom. Maurizio Marti

Il Responsabile del Procedimento
Geom. Maurizio Conti






Ufficio Urbanistica
Geom. Maurizio Conti



LEGENDA

Confine comunale

Classi di Pendenza

-  Pendenza inferiore al 5%
-  Pendenza compresa tra 5 e 15%
-  Pendenza compresa tra 15 e 25%
-  Pendenza compresa tra 25 e 35%
-  Pendenza superiore al 35%